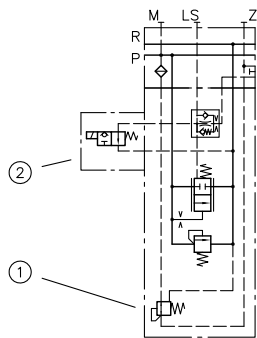




## Function

### Connection blocks:

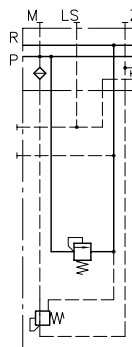
#### PSLF



- 1 Pilot pressure valve
- 2 2/2-way solenoid valve

Connection block for constant pump systems with integrated 3-way controller, pressure-limiting valve and LS shutdown

#### PSVF



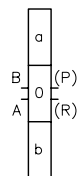
Connection block for variable pump systems with and without pressure-limiting valve

### Additional versions of connection blocks:

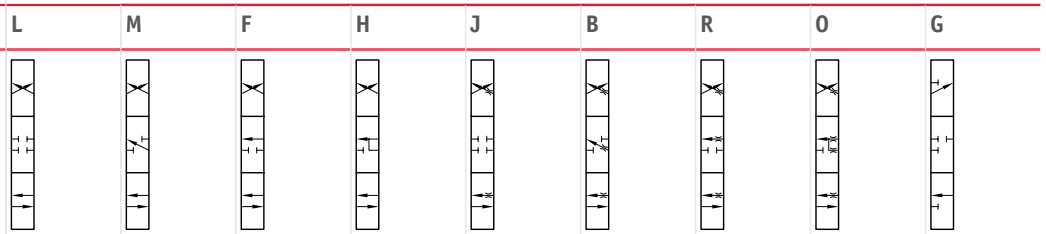
- 2/2-way solenoid actuated directional valve for arbitrary idle pump circulation
- Additional damping of the 3-way flow controller or pump controller
- Proportional adjustable pressure limitation

### Valve sections:

#### Basic symbol

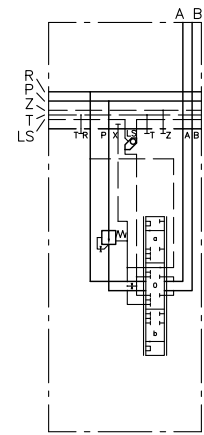


#### Circuit symbol



**Versions of valve sections:**

- Load-signal outlets at A, B; A and B together
- Version with and without 2-way inflow controller
- Function deactivation
- Secondary pressure-limiting valves (can be individually selected for A and/or B)
- Proportional pressure limitation of the individual functions
- Sub-plates with different additional functions
- Sub-plates for ancillary blocks
- Sub-plates for combining various sizes
- Combination of various sizes in one valve bank possible
- Version with EX solenoid for use in potentially explosive areas
- Version with explosion-proof, intrinsically safe solenoids for mining applications



**Key figures for max. flow rates:**

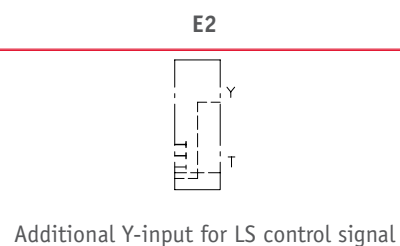
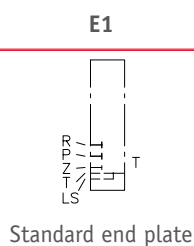
Size	Q <sub>A, B</sub>							
	3	6	10	16	25	40	63	80
Size 3	3	6	10	16	25	40	63	80
Size 5	16	25	40	63	80	120	160	
Size 7	120	160	250	320	400			

- Key figure represents the max. flow rate (lpm) at consumer ports A or B for version with inflow controller
- Flow rates for A and/or B can be selected individually
- Increasing the control pressure means that 60 lpm (size 2), 120 lpm (size 3), 240 lpm (size 5) and 500 lpm (size 7) is possible per consumer port side.
- Versions with 2-way inflow controller and check valve function

**Actuations:**

Basic type	Brief description	Circuit symbol (example)
A	Manual operation	<p>Combination of electro-hydraulic and manual operation</p>
C	Detent (stepless)	
E EA	Electro-hydraulic actuation in combination with manual operation	
EI CAN EA CAN	CAN: Actuation variant with CAN control in combination with manual operation	
H, P HA, PA	Hydraulic and pneumatic actuation in combination with manual operation	
HEA	Combination of H, E and A actuation	

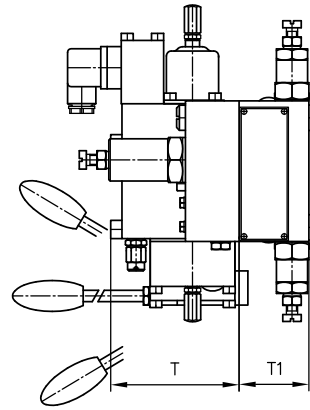
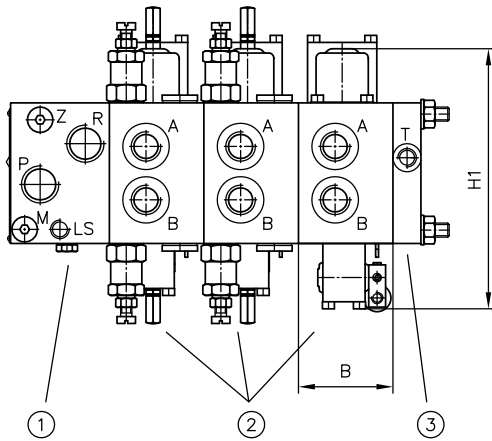
**End plates:**



**Additional versions of end plates:**

- End plate with internal leakage oil routing (no tank connection)
- End plates with additional R port
- Adapter plate for combining size 5 and 3 (coding ZPL 53)

## General parameters and dimensions



- 1 Connection block
- 2 Valve sections
- 3 End plate

	Flow [lpm]		Oper. pressure [bar]	Ports		Dimensions [mm]				m [kg]	
	$Q_{max}$	$Q_{PU\ max}$	$p_{max}$	P, R	A, B	H1	B	T	T1	1)	2)
<b>PSLF/PSVF 3</b>	3 - 120	200	420	G 3/4, 1 1/16-12 UN-2B	G 1/2, G 3/4, 7/8-14 UNF-2B	195	50	80	50	3.3 ... 4.1	6.6 ... 7.6
<b>PSLF/PSVF 5</b>	16 - 210	350	400	G 1, G 1 1/4, SAE 1 1/2"	G 1, SAE 1"	224	62.5	100	100	3.7 ... 4.5	10.9 ... 16.3
<b>PSLF/PSVF 7</b>	120 - 500	1000	400	G 1 1/2, SAE 1 1/2"	G 1 1/4, SAE 1 1/4"	305	106	101	95	13	23

- 1) Per valve section depending on actuation and additional functions  
 2) Per valve section complete with sub-plate

### Products suitable for combination:

- Load-holding valves type LHT, LHDV: [D 7100](#), [D 7770](#), [D 7918](#)
- Joystick: [Proportional pressure-reducing valve type KFB 01: D 6600-01](#)

### Additional electrical components:

- Proportional amplifier: [D 7831/2](#), [D 7831 D](#), [D 7817/1](#)
- Programmable logic valve control type PLVC: [D 7845-41](#), [D 7845 M](#)
- [CAN node type CAN-IO: D 7845 IO](#)

### Associated technical data sheets:

- [Proportional directional spool valve type PSLF, PSVF and SLF: D 7700-F](#)
- [Proportional directional spool valve banks type PSLF and PSVF size 7: D 7700-7F](#)
- [Actuation for proportional directional spool valves type PSL/PSV: D 7700 CAN](#)